

CGS2531 Problem Solving Using Computer Software

Summer 2020

Comment from previous students after taking the class

I enjoyed the relatable examples used to demonstrate how the material could be applied to our daily lives. The problem-solving process is useful when we face open-ended questions that we may be indecisive about.

The course has improved my technological knowledge and my ability to use a computer to solve problems.

I thought it was very interesting to learn computer skills and get to test my knowledge through the variety of projects and assignments assigned in this course.

I thought I knew everything about Microsoft word, but this class showed me a lot more applications than I knew were possible

I think that learning how to use pivot tables was a really important skill

Course Description

(Credits: 3) A problem-solving introduction and thorough exploration of word processing, spreadsheet management, data analysis, graphical display of data, and multimedia presentations. The problem-solving approach also aids students in their specific majors through software applications requiring major-specific professional communication skills in written, graphical, and presentation forms.

Pre-Requisites & Co-Requisites: none



Table of Contents

Course Description	1
Pre-Requisites & Co-Requisites: none	1
SLOs and Course Goals.....	4
Content.....	4
Critical thinking	4
Communication	4
Mathematics	4
Instructional Team	5
Instructor:.....	5
What to expect from me as your instructor:	5
Communication with me (your instructor)	5
Undergraduate peer mentors:.....	6
Details about the course	7
Course Content	7
Course Assessment (Evaluation).....	7
Quizzes – 30 points	7
Assignments – 60 points	8
Participation – 10 points	8
Certification (optional).....	8
Time Zone considerations	9
Policy on course evaluation	10
Policy on deliverables with issues.....	10
On where you need to submit to get credit.....	10
On errors, mistakes or other issues while submitting	10
Policy on discussion boards.....	11
Policy on late assignments	11
Policy on late Quizzes.....	11
Exceptions to the late policy	11
Policy on Extra-time or Extensions.....	12
Policy on Grading Dispute and Procedure:	12
Bank Time (only for eligible students)	13
Grading Scale:.....	13
Meeting Times/ Course Schedule:	13
Attendance and Expectations:	13



University Honesty Policy.....	14
My diversity and Inclusion Statement:	15
Accommodation for Students with Special Needs:	15
Course Resources	15
Materials & Supply Fees: none	15
Textbook:	15
Software required for this course	16
Hardware.....	16
Internet connection	16
Technical issues.....	16
Course Evaluations.....	16
Policy on Software Use	16
General course guidelines.....	17
Student Privacy	17
Commitment to a safe and inclusive learning environment	17
Campus Resources	17
Health and Wellness.....	17
Academic Support	18
E-learning technical support	18
Career Connections Center	18
Library Support.....	18
Teaching Center	18
Writing Studio	18
Student Complaints Campus.....	18
On-Line Students Complaints.....	18



Department of Engineering Education

Your success in this class is important to me. We all will need accommodations because we all learn differently. If there are aspects of this course that prevent you from learning or exclude you, please let me know as soon as possible. Together we'll develop strategies to meet both your needs and the requirements of the course.

I encourage you to visit the [Disability Resource Center \(DRC\)](#) (352-392-8565) to determine how you could improve your learning as well. If you need official accommodations, you have a right to have these met.

SLOs and Course Goals

In this course you will be introduced and will build on the following Student Learning Outcomes (SLOs) of the Business School:

Content

- Demonstrate knowledge and understanding of elements of economics, financial accounting, marketing, operations management, organizational behavior, business law, information technology, business statistics, and social responsibility.
- Demonstrate proficiency in the use of business-related software applications

Critical thinking

- Specify and implement a framework for identifying a business problem and develop alternative solutions and a set of evaluation criteria.
- Assess the outcomes of a course of action and make appropriate adjustments

Communication

- Write business documents clearly, concisely and analytically.

Problem Solving Using Computer Software

- Speak in groups and in public clearly, concisely and analytically, with appropriate use of visual aids

Mathematics

In this course, you will receive credit for mathematics because it provides instruction in computational strategies in fundamental mathematics such as: solving equations, logic, statistics, algebra, inductive and deductive reasoning. The course includes formulating mathematical models and arguments, using mathematical models to solve problems and applying mathematical concepts effectively to real-world situations



According to the SLOs for the school of business, **the course goals for CGS2531** are:

- Students will use Excel, Word, and PowerPoint to aid in their problem-solving process.
- Students will write a plan on how they would address an open-ended problem using the language of the problem-solving framework.
- Students will analyze real-world data, such as applying business statistics techniques and mathematical models and create data visualizations for problem-solving
- Students will demonstrate professional, inclusive communication

Remember:



Department of Engineering Education

You will use these course goals in the final assignment.

A detailed description of the alignment between course goals, learning objectives, assessments, assignments, and content can be found in the course map available in Canvas.

Instructional Team

Instructor:



I am Dr. John Mendoza-Garcia. I am so excited and honored to be your guide in this class. I received my Ph.D. from Purdue University in Engineering Education. I am married and have a daughter who is my inspiration. My hobbies are all activities I can

do with my daughter and family. Some of those are traveling, hiking, and biking. Find more information about me in Canvas under Welcome to the *Course=>Meet Your instructor/Instructional Team*.

Email: please use the Canvas email first. This is my email too: jmendozagarcia@ufl.edu

Office location: because of COVID-19, I am working from home this summer

Telephone: +1(352)-294-0485

Office hours (starting on week 02): Thursdays 10:30 am – 12m.

Where: [zoom](#) .

What to expect from me as your instructor:

I will do everything I can to help you succeed in this class. I will do my best in responding to your questions on discussion boards and e-mails in a 24-48 hours range on business days. If you write me on Friday, please expect your answer on the next business day (for example, if you write me on Friday at 6pm, I will reply between Monday and

Problem Solving Using Computer Software

Tuesday 6pm). I usually do recreational activities with my family on weekends, vacation breaks, or outside of business hours. If you do not receive an answer from me within that range of time, please, write to me again, somehow I might have missed your email. Why? I get many emails, in Canvas and in my UF emails. If you sent me your email through the UF email, it might get

My announcements: There will be one weekly announcement at the beginning of the week. Please make sure you watch it. I may send other announcements during the week, for example, when I perceive that several of you have a similar question about an assignment, and I see an opportunity to reach most of you and clarify any general doubt. I will also send you reminders.

About the grading of your assignments: You can submit your assignment any time before the due date. However, the grading of the assignments starts typically one day after the assignment’s due date. At that time, my peer mentors and I will do our best to grade your assignment and publish the grades within 8 business days (1,5 weeks). If after that range of time your grade does not show up in Canvas, please contact me (I prefer a Canvas email).

Communication with me (your instructor)

[1] Questions about assignments? Not graded Discussion boards

I will provide different discussion boards in which you can ask any question related to the assignments. You can also post questions that seek clarification on the syllabus, curriculum or instruction. Also post here those questions in which you are reporting Technical issues with course materials.

I also like the description written for further information or guidance on when to publish on online discussion boards at the Online student

Instructor: John Mendoza-Garcia, PhD



Department of Engineering Education

resources webpage created by the Online Public Health Program with the title "[When to post to the support discussions.](#)" I and most online instructors follow the same premises.

What you can expect if you post your questions in the discussion board: You will get an answer either from me, from one of my peer mentors, or from other students in the class. Typically, you can get an answer sooner than if you write them by email.

What not to publish in discussion boards: Please, do not post answers to questions asked in quizzes or assignments, that would be considered cheating. Your personal questions related to assignments, grades or other private matters should be sent directly to the instructor through Canvas email (see previous section).

[2] In person communication

I will hold office hours either in person or online. Please, meet me to talk about a special situation you are experiencing that is impacting your performance in my class, or in case you have questions about the assignments.

I prefer Zoom than the phone because I can help you better, for example, I can share my screen and see yours.

[3] e-mail communications

You have email on the Canvas course site under the "Inbox" tool. This is my preferred method of communication, and this is how I will contact you if necessary. Please, adjust the settings to have all course mail forwarded to your regular UF email account so that you don't miss anything or forget to check your new emails.

How to make sure I get your emails: send it using the Canvas email (preferred because I always look into my Canvas Inbox first), or If you send me

Problem Solving Using Computer Software

your email to my UF email, always use your UF email to avoid being filtered by the Spam monitoring system. if I have not replied within the time, look in the sent messages, and forward the email, so you do not have to write the same text twice. Bear in mind to follow the email etiquette (nettiquette) taught in the first module of this course.

When to send email to me (The instructor):

Contact me through email when you have: a scheduling conflict, suspect a grading error, family emergency, technical issue or are behind in the course.

If you cannot use the Canvas course Inbox option, email me to my UF email.

For further information on when to email me, I like the description created by the Online Student Resources at Public Health Program web page with the title "[When to send email to the instructor.](#)" I and most online instructors follow the same premises.

Please, follow the [e-mail etiquette guidelines](#) provided in the video.

Undergraduate peer mentors:

I will provide peer mentors who can help you to answer any questions about the course assignments.

Peer mentors will have two different roles:

[1] Assist you in the development of the assignments through online office hours (2 hours a week) and will help answering questions in the discussion boards. Each of them will offer 2 hours a week for office hours for that purpose. Make sure you take advantage of their knowledge.



Department of Engineering Education

[2] Grade your work. I will work with them to make sure you are graded fairly

The full list of peer mentors for this course can be found in Canvas under Welcome to the Course=>Meet Your instructor/Instructional Team.

Note

Peer mentors will be helping any student and will grade different students across all the assignments. Still, you will have the option to select one, so you can always reach out for a more personalized help.

Communication with your peer mentors

[1] In person communication

The undergraduate peer mentors will hold **consultation hours** online consultation hours weekly through Zoom, and you can attend any of these. Their office hours will be announced at the beginning of the semester.



[2] e-mail communications

You can contact the peer mentors when seeking answers to questions related to the course material, assignments, and will provide clarification to the students when needed. You can choose your peer mentor according to the office hours that work best for you.

Please, follow the [e-mail etiquette guidelines](#) provided in the video in the introduction module.

Details about the course

Course Content

This is important!

You will find that the course is divided into 15 modules. Modules are designed to build on the technical components of the course, and on the

Problem Solving Using Computer Software

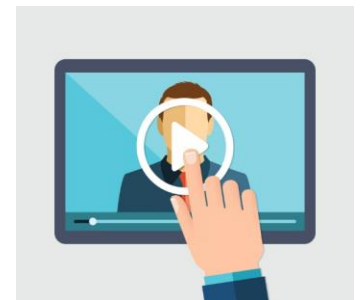
professional skills related to developing your Problem-Solving skills. This summer, you will be responsible for creating the deliverables for one or two modules per week.

Materials you should review every week:

- [Weekly messages from me](#)
- [Written instructions for the assignments.](#)
- [Videos explaining the assignments.](#)
- [Videos helping you to go about the assignments.](#)
- [Assignment Rubrics](#)

This is important!

Students who do best in the course are those who watch all the videos, please, watch them.



Course Assessment (Evaluation)



Quizzes – 30 points

assess your memory and understanding.

There are 9 open-book individual quizzes:

- Intro to this course quizzes : 5 points (syllabus + netiquette)
- Problem Solving Process: 2.5 points
- Basics of Excel: 10 points
- Statistics: 6.5 points
- Regression: 6 points

Notes about quizzes

- Quizzes can be taken at any time before the deadline.
- You can take the quizzes two times.



Department of Engineering Education

- For your grade calculation, the system will only consider the highest grade.
- The answers of the quizzes will be published after the due date. Accordingly, you will not get individualized feedback unless your answer is right but was not taken by the system.
- No points for quizzes will be awarded after the deadline unless you have a valid excuse.
 - Quizzes are timed.
 - If you start a quiz, there is no way to stop it. So, before you start a quiz, make sure you are prepared to take it, otherwise, you will lose one of your opportunities.

General course Assignments – 60 points

Assess your ability to apply the concepts and use them to analyze real-world scenarios or cases. There will be one or two assignment due every week (one per module assigned per week). According to previous students, the average number of hours they spent on one assignment is 6 hours. In each assignment, you will need to submit one or more files to fulfill the requirements. Assignments will usually ask you to reflect, and the one on module 13 will ask you to do peer reviews.

- **Reflections and self-assessments:** provide opportunities to develop reflective practice.
- **Peer reviews:** Contributes to your critical thinking, inclusive communication, and learning of the content. It also develops the professional skill of providing feedback to peers.

Participation – 10 points



Being able to participate in community of Learning in which you can learn from each other is relevant for your future professional practice. Accordingly, you

Problem Solving Using Computer Software

will be sharing your knowledge and experiences to build on the understanding of course topics by the other students. This sharing will happen through different discussion boards. These discussions assess your analysis and critical thinking in regards to using the content of the course in the future. It also builds upon your inclusive communication.

This is important!

Note: This course has two types of discussion boards. [1] Participation assignment related ones (graded), in these discussions students must respond to prompts related to open-ended problems.

[2]Support/Assignments related discussion boards in which students ask questions about the assignment. Students’ participation in the latter is not valid to get participation points.

LinkedIn learning course for Certification (optional)

Among others, the course has two components that help you build your skills with the basics of Word (5 points) and Excel (10 points). To get all the possible points in such component, you have the opportunity to choose between assignments, or combine them. Word component: You can complete a Word formatting assignment, or complete the LinkedIn course for the [Word 2016 office specialist certification](#) (77-725) (5 points). You can also combine them, for example, if you did not get all the points for the Word formatting assignment, by taking the LinkedIn course you will get all the points that are left in that component.

Similarly, you can also choose between the basic of Excel quizzes or the [Excel 2016 Microsoft Specialist \(77-27 course\)](#) (10 points).

To make valid your training, you have to take and pass the Full-length practice exam, and submit in the assignment the course certification provided



Department of Engineering Education

by LinkedIn. Find in Canvas further information about these optional assignments.

If you are already certified, you can also get the points for these components at any time in the course. This means that if you submit at the beginning of the course, you will not need to complete the Word Formatting assignment, or the Excel quizzes.



In case you want to take the formal certification, you will need to go to a Certiport authorized testing center and take an exam there **(I have no business relationship (or any other) with Certiport, and Certiport is not affiliated to the University of Florida). Therefore, I do not know about their availability for testing.**

Frequent Ask Questions (FAQ) about how the certification will count in your grade:

“I already have a certification, should I take the exam again?”

No, you just need to upload the certification in the right certification Canvas assignment and after the due date of the assignments that the certification is replacing, I will award you all the possible points for the course component your certification is related to (Word: 5 points; Excel: 10 points).

“If I have submitted proof of the Word certification, do I need to do the Word Formatting Assignment?”

No, you don't need to do the Word formatting assignment (and it is not expected you do so) because you have already reached all the possible points in that course component.

“If I have the Excel certification, should I also take the Basics of Excel quizzes?”

Problem Solving Using Computer Software

No, you are not supposed to take the quizzes (and it is not expected), because you have already reached all the possible points in that course component. Please, do not take them.

“What if I had a poor grade in the Word formatting assignment, or in one or more quizzes, how the certification would help me?”

With the certification, I will give you the points you need in order to get all the possible points in that component of the course. For example, if you got only 2 points in the Word Formatting Assignment, the Certification will raise your grade to 5 points in that course component. Similarly, if you got only 5 out of 10 possible points in the Basics of Excel Quizzes, the certification will give you 5 additional points.

If I showed proof of my certification, should I take the quizzes in the other quizzes course component (statistics, regression, etc)?

Yes, you are expected to take all the quizzes on the “other quizzes” course component (20% of the grade).



Time Zone considerations

In Canvas, you will find a list of the assignments with their due dates in Eastern Time. The deadlines listed are the latest you can submit the assignment (be aware that Canvas shows two dates: the due date, and the date until the assignment is available for late submission – 1 day later). Install the Canvas student App and activate the notifications.

Students in a different Time zone should adjust their schedules to comply with the eastern time requirement. For example, if you are in Los Angeles, CA, you will have to submit before 9 pm of Pacific time.

Policies on course evaluation

This is important!

Policy on deliverables with issues

If one or more of the following is (are) true for the deliverable you submit, you will be able to resubmit, but you will get the late penalty (unless you are eligible to use your [Bank Time](#)).

- It has a virus,
- It is corrupt in Canvas
 - This is how a corrupt file can look in Canvas.
 - ~\$jmendozagarcia_Word_Ass04_Report_on_Regression.docx
 - If it is corrupt when clicking on the file, the Software shows an error message or shows no error but it does not open.

A file can get corrupted because of a malfunction of your computer or a network communication problem.

Usually, when the file is corrupt in Canvas, the document name starts with the symbol tilde ~.

- The file you submitted was the wrong one.



This is important!

Please, make sure that we can grade the file you want us to grade.



These are some tips to avoid having a corrupt or the wrong file on Canvas: do not wait until the last minute to try to upload your assignments

or take your quizzes (Battle Murphy's Law!), and instead:

1. Make sure you have no virus
2. Upload your document early (you can submit an assignment from day 1 they are published).
3. Log out, and log back in
4. Download your assignment and open it. Can you see it? If you can, there is a high probability that we can too.

On where you need to submit to get credit

We will only grade what is available in Canvas, and that was submitted through the assignment description section.

On errors, mistakes or other issues while submitting

Deliverables will not be accepted by the Canvas e-mail, by the regular e-mail, or by any other online sharing media unless you are authorized by me (the instructor).

Likewise, if you complete the assignment several minutes or hours before the due date, but you miss submitting it before the due date, you can submit it later, but before the assignment is closed (you will have 23 hours 29 minutes to get some credit for it). In this case, you will get the late penalty.

We will only grade your last submission, so make sure that you either submit only once or if you submit more than once, that your last submission has the right file(s) and it is complete.



Department of Engineering Education

Example, if in an assignment you need to submit 2 different documents, you must submit both files in one submission.

However, if after verifying your submission you find out that one file is corrupt or is missing, you should submit again the two files in a second submission.

We will grade your last submission, so any previous submission will not be considered.

In addition, if your first submission was before the due date, but your last submission is after the due date (1 second to 23:59 hours late), your deliverable will be graded with the late policy.

Policy on discussion boards

Since discussion boards intend to create a space for interaction between students, you will not be able to participate in the discussions once they are closed. There is no exception for this rule because if you miss participating in one discussion, you still have the chance to participate in the other 6 (The minimum required number of discussion you should participate is 5).

Policy on late assignments



This is important!

I understand, sometimes life gives us unexpected situations and in that case, it is impossible to get on top

of our duties. Thinking that sometimes students for diverse reasons could miss one or more due dates, I have decided to give you the opportunity to get up to 50% of the points of the assignment if you submit it between 1 second and 23 hours 59minutes and 59 seconds hours late (this means that your grade will get a discount of 50% of the total possible number of points of the assignment).

Problem Solving Using Computer Software

Example: Your assignment deliverable was late (for example at 12 am and 5 seconds) and the assignment is worth 9 points. If the grade in that assignment was 7, you will get 50% discount of the total possible points (50% of 9 is 4.5 points). Your grade would be $7 - 4.5 = 2.5$. 😞

The good news is that you can use the Bank Time at the end of the semester (if you qualify) to waive this penalty.

23 hours 59 minutes and 59 seconds after the due date, the deliverable will not be accepted, and you will get 0 points in that assignment.

Frequent question:

Can I use the Bank Time for submitting an assignment and get credit for it?

Yes, but you will get the late policy discount.

Policy on late Quizzes

If you missed a quiz, there is no way you can take it past the deadline unless:

- The quiz due date were on the first week of classes and you added the course in that week.
- You use the Bank Time option for taking the missing quiz (In this case you will get the late penalty).

Exceptions to the late policy

Exceptions to the late policy are only allowed per university policy or if you are eligible to use the Bank Time (See below for more information).

Extensions

Typically you will have enough time to complete the activities, so I prefer not to give extensions. However, if you have a special and unforeseen circumstance that makes you need more time for



Department of Engineering Education

an assignment, please contact me before the due date, I might approve you one.

Policy on Extra-time or Extensions

**DEADLINE
* EXTENDED ***

Since this class is a 3-credit course, it is expected that students invest 9 hours per week in the course. Based on data shared by previous students, weekly assignments can be done in 6 hours or less. Since assignments are published several weeks in advance, you will be plenty of time to work on the assignments and that is why I do not offer extensions unless you qualify for a University based exception (Example: you had to go to the Emergency Room, you have a family emergency, etc).

Extra-time for athletes

I will be happy to grant you early access to any assignment you need. Since assignments are published several days in advance and each take, according to students from previous semesters an average time of 6 hours to be done, I have not considered providing extra-time. I believe that athletes also are aware of their competition calendars. Please, plan ahead and submit your deliverables before you leave for a tournament. Still, if you have a special situation, please contact me copying your Academic Advisor.

Extra-time in assignments for Students with special needs

If you have been approved for extra-time on out of the class assignment, please, plan ahead. We do not have a specific class time, assignments are not timed and are published several days before the due dates. You will have plenty of time to work on

Problem Solving Using Computer Software

the assignments if you plan ahead and start early. However, I understand that you work at a different pace, accordingly, I will not apply the late policy to your deliverable, in case you submit your assignment late. Just remind me to waive it because Canvas will apply it automatically. Deliverables will not be accepted later than that.

Extra-time in quizzes for students with special needs

e-mail me your current DRC request as soon as possible, or at least 1 week before the quiz deadline to get your extra time added.

Policy on Grading Dispute and Procedure:

You must submit any grading disputes to me (John Mendoza-Garcia) within one week of your assignment grade being posted. So, once your grade is posted, please review the rubric, the peer mentor comments, and the solution, if available. Follow up immediately with me if you have a legitimate grading dispute. Please be aware that I will regrade the assignment, which can cause your grade to go up or down. Please submit a justification as to why you think your assignment needs to be regraded and state that you are aware of the possibility to get your grade increase or decrease because of the re-grading.

Please do not use phrasing such as "I worked so hard on this assignment, I deserved more points!", in professional practice what counts are the results of your output, some projects you work on will take more effort, some less effort, but you have a set of requirements to meet.



Bank Time (only for eligible students)



Considering that “things” happen, I will waive the late policy in two of your deliverables at the end of the semester. I will ask no questions. To be eligible for this benefit, you should submit at least 50% of your assignments, quizzes or

participations in discussions at least one day before the due date. If you are eligible and want to use this benefit, just send me a Canvas email as follows:

Subject: *I am using my bank time.*

Body of the message: *Dear Dr. Mendoza-Garcia, since I have submitted most of my assignments, quizzes and participated in discussions at least one day before the due date, I would like to use my bank time to waive the late penalty on the following assignment(s): [replace this text with the name of the one or two assignments].*

This email can only be sent last week of classes (only there I can verify that what you say is true).

Grading Scale:

Percent	Grade	Grade Points
92 - 100	A	4.00
90.0 - 91.99	A-	3.67
88 - 89.99	B+	3.33
82 - 87.99	B	3.00
80.0 - 81.99	B-	2.67
76.7 - 79.99	C+	2.33
73.4 - 76.6	C	2.00
70.0 - 73.3	C-	1.67
66.7 - 69.9	D+	1.33
63.4 - 66.6	D	1.00
60.0 - 63.3	D-	0.67
0 - 59.9	E	0.00

This is important!

Grades will not be rounded-up

Here you can find [the current UF grading policies for assigning grade points](#)

Meeting Times/ Course Schedule:



This is an asynchronous online course, there are no set meeting times. All lecture videos and course materials are delivered online through Canvas, the UF course management system; LinkedIn Learning, and other online resources. Students can work ahead since lecture videos and assignments are listed well ahead of the due dates of each assignment.

Make sure you watch the weekly message as soon as it is published. Since it will be sent through an announcement, activate the Canvas notifications in your phone app.

Attendance and Expectations:

Since this is an online course, there is no attendance requirement. However, I expect you to watch the weekly messages, and all the course videos and engage in conversations with the other students of this class in the discussion boards and the peer reviews. Requirements for class attendance and make-up exams, assignments, and other work in this course are consistent with the [attendance policies](#) at UF.



This is important!

University Honesty Policy

UF students are bound by The Honor Pledge which states, "We, the members of the University of Florida community, pledge to hold ourselves and our peers to the highest standards of honor and integrity by abiding by the Honor Code. On all work submitted for credit by students at the University of Florida, the following pledge is either required or implied: "On my honor, I have neither given nor received unauthorized aid in doing this assignment." [The Honor Code](#) specifies the number of behaviors that are in violation of this code and the possible sanctions. Furthermore, you are obligated to report any condition that facilitates academic misconduct to appropriate personnel. If you have any questions or concerns, please consult with the instructor or peer mentors in this class.



For example, quizzes are open book. So, I expect you to work on the quizzes individually. I also expect that you help each other, but that you do not provide the answers to your questions to other students. From assignments, I expect that you work on them individually and from scratch, or using material created only by yourself. Still, you can ask questions to others, but it is not expected that you share your deliverables with other students. It is not approved to use deliverables from previous semesters.

All assignments are checked using Turnitin for the originality of composition. Turnitin will give us a match percentage between your deliverable, and all the deliverables ever submitted (in the current semester and in previous ones). If your assignment gets a high match percentage, I will report the case for possible plagiarism to the Dean of students office.



Note that failure to comply with this commitment will result in disciplinary action compliant with the UF Student Honor Code Process. See the process at this [link at the Dean of students office.](#)

This process of reporting you to the Dean of Students office is a time-consuming activity, and I prefer to use that time in helping you to learn what you need in order to do well in the assignments. With this, I am asking you to take your academic integrity very seriously. I understand that learning new concepts are sometimes challenging, and that you may get frustrated. However, before deciding to pursue alternate options (e.g. cheating, plagiarism, etc), please contact me or one of your peer mentors. I will do my best (and my peer mentors as well) to help you to learn what you need in order to achieve academic success.



My diversity and Inclusion Statement:



I seek to create an environment in which each student is treated equally, fairly and do my best to give you encouragement based on your learning needs, and if necessary, your special needs. This happens regardless of race, gender, ethnicity, sexual orientation, or place of birth. I also seek to provide support and encouragement to minority students like first-generation college students, Blacks, Latinos, and those from the LGBTQIA communities. To accomplish this, I would need your help:

- If you have a name and/or set of pronouns that differ from those that appear in your official University of Florida records, please let me know!
- If you feel like your performance in the class is being impacted by your experiences outside of class, please contact me. I want to be a resource for you. Remember that you can also submit anonymous feedback (which will lead to me making a general announcement to the class, if necessary to address your concerns).
- Although I took training to become Ally, I consider that I am still in the process of learning about diverse perspectives and identities. If something was said or written in this course (by anyone) that made you feel uncomfortable, please let me know. (Again, anonymous feedback is always an option).

- Some local and international students may struggle with my accent, the music of my speaking, or the grammar of my speaking. Since English is my second language, I understand this process of adapting the ear to understand other nationalities accents. I experienced it myself when I was learning English with other non-native English speakers, or when I talk to Americans or other internationals who have Spanish as their second language. Accordingly, feel free to ask for repetition or clarification. I will be happy to provide it.

Accommodation for Students with Special Needs:

As explained above, students with special needs requesting accommodations should first register with the Disability Resource Center (352-392-8565, www.dso.ufl.edu/drc/) by providing appropriate documentation. Once registered, students will receive an accommodation letter which must be presented to me when requesting an accommodation. Students with special needs should follow this procedure as early as possible in the semester.

If you need further accommodations, we can meet during my office hours or at another time that works for you.

Course Resources

Materials & Supply Fees: none

Textbook:



No text book to buy



Software required for this course



Students will need to install the desktop version of the Office 2016 software package in their computers. Previous versions or the online version do not have some of the functionalities that will be taught in the course.

While you are a UF student, you can obtain free access to the latest UF approved Office version from the UF IT website at [gator cloud](#).



Windows 10

Most of the videos and assignments are recorded with the Windows version of Office. I strongly suggest that, if possible, you use a Windows computer for this class because it will be easier for you to match the screen in the video with the one in your computer.

However, if you decide that you will use a Mac and the desktop Mac version of Office, be aware that although the functionality is the same, some of the menus and options are in a different place. You may need extra time to figure out where these options are. We will be happy to help you during office hours or through discussion boards, but still, be aware that I do not have access to a Mac computer this summer because I am working from home. Still, some of the peer mentors work in a Mac, so you can ask them. I will also create a discussion board in which Mac users of this course can help each other faster than our 24 hour-response-window.

Hardware

- Microphone and camera.
- Since you will be learning how to use advanced features of Excel, you will need a reliable computer.

Internet connection

This is an online course. For succeeding in this course, you will need a reliable high-speed internet connection. Be aware that low-speed connections may give you a delay in the videos or other issues with the online content. You may also have troubles with quizzes. Internet connections in Hotels or public places are most of the times slow.

Technical issues

In case you experience technical difficulties, please contact the [help desk](#).

Course Evaluations

Students are expected to provide professional and respectful feedback on the quality of instruction in this course by completing course evaluations online via GatorEvals. Guidance on how to give feedback in a professional and respectful manner is available at <https://gatorevals.aa.ufl.edu/students>. Students will be notified when the evaluation period opens, and can complete evaluations through the email they receive from GatorEvals, in their Canvas course menu under GatorEvals, or via <https://ufl.bluera.com/ufl>. Summaries of course evaluation results are available to students at <https://gatorevals.aa.ufl.edu/public-results/>

Policy on Software Use

All faculty, staff, and student of the University are required and expected to obey the laws and



Department of Engineering Education

legal agreements governing software use. Failure to do so can lead to monetary damages and/or criminal penalties for the individual violator. Because such violations are also against University policies and rules, disciplinary action will be taken as appropriate. We, the members of the University of Florida community, pledge to uphold ourselves and our peers to the highest standards of honesty and integrity.

General course guidelines

Student Privacy

There are federal laws protecting your privacy with regards to grades earned in courses and on individual assignments. For more information, please see this link at the registrar web page on the Family Educational Rights and Privacy Act of 1974 ([FERPA](#)).

Commitment to a safe and inclusive learning environment

The Herbert Wertheim College of Engineering values broad diversity within our community and is committed to individual and group empowerment, inclusion, and the elimination of discrimination.

It is expected that every person in this class will treat one another with dignity and respect regardless of gender, sexuality, disability, age, socioeconomic status, ethnicity, race, and culture.

If you feel like your performance in class is being impacted by discrimination or harassment of any kind please contact your instructor or any of the following:

- Your academic advisor or Graduate Program Coordinator
- Robin Bielling, Director of Human Resources, 352-392-0903, rbielling@eng.ufl.edu

Problem Solving Using Computer Software

- Curtis Taylor, Associate Dean of Student Affairs, 352-392-2177, taylor@eng.ufl.edu
- Toshikazu Nishida, Associate Dean of Academic Affairs, 352-392-0943, nishida@ufl.edu

Campus Resources

Health and Wellness

[U Matter, We Care](#)

Your well-being is important to the University of Florida. The U Matter, We Care initiative is committed to creating a culture of care on our campus by encouraging members of our community to look out for one another and to reach out for help if a member of our community is in need. If you or a friend is in distress, please contact umatter@ufl.edu so that the U Matter, We Care Team can reach out to the student in distress. A nighttime and weekend crisis counselor is available by phone at 352-392-1575. The U Matter, We Care Team can help connect students to the many other helping resources available including, but not limited to, Victim Advocates, Housing staff, and the Counseling and Wellness Center. Please remember that asking for help is a sign of strength. In case of emergency, call 9-1-1.

[UF Counseling & Wellness Center](#),

Or call 392-1575; and the University Police Department: 392-1111 or 9-1-1 for emergencies.

[Sexual Discrimination, Harassment, Assault, or Violence](#)

If you or a friend has been subjected to sexual discrimination, sexual harassment, sexual assault, or violence contact the [Office of Title IX Compliance](#), located at Yon Hall Room 427, 1908 Stadium Road, (352) 273-1094, title-ix@ufl.edu

[Sexual Assault Recovery Services \(SARS\)](#)

Student Health Care Center, 392-1161.



Department of Engineering Education

[University Police Department](#)

At 392-1111 (or 9-1-1 for emergencies).

[Academic Support](#)

[E-learning technical support](#)

352-392-4357 (select option 2) or e-mail to Learningsupport@ufl.edu.

[Career Connections Center](#)

Reitz Union, 392-1601. Career assistance and counseling.

Problem Solving Using Computer Software

[Library Support](#)

Various ways to receive assistance with respect to using the libraries or finding resources

[Teaching Center](#)

Broward Hall, 392-2010 or 392-6420. General study skills and tutoring.

[Writing Studio](#)

302 Tigert Hall, 846-1138. Help brainstorming, formatting, and writing papers.

[Student Complaints Campus](#)

[On-Line Students Complaints](#)